

# Traveling Cross Fold

(6" x 6" Folded)

EXTERIOR

INSIDE LEFT FIRST VISIBLE



INSIDE RIGHT SECOND VISIBLE



BACK COVER



FRONT COVER

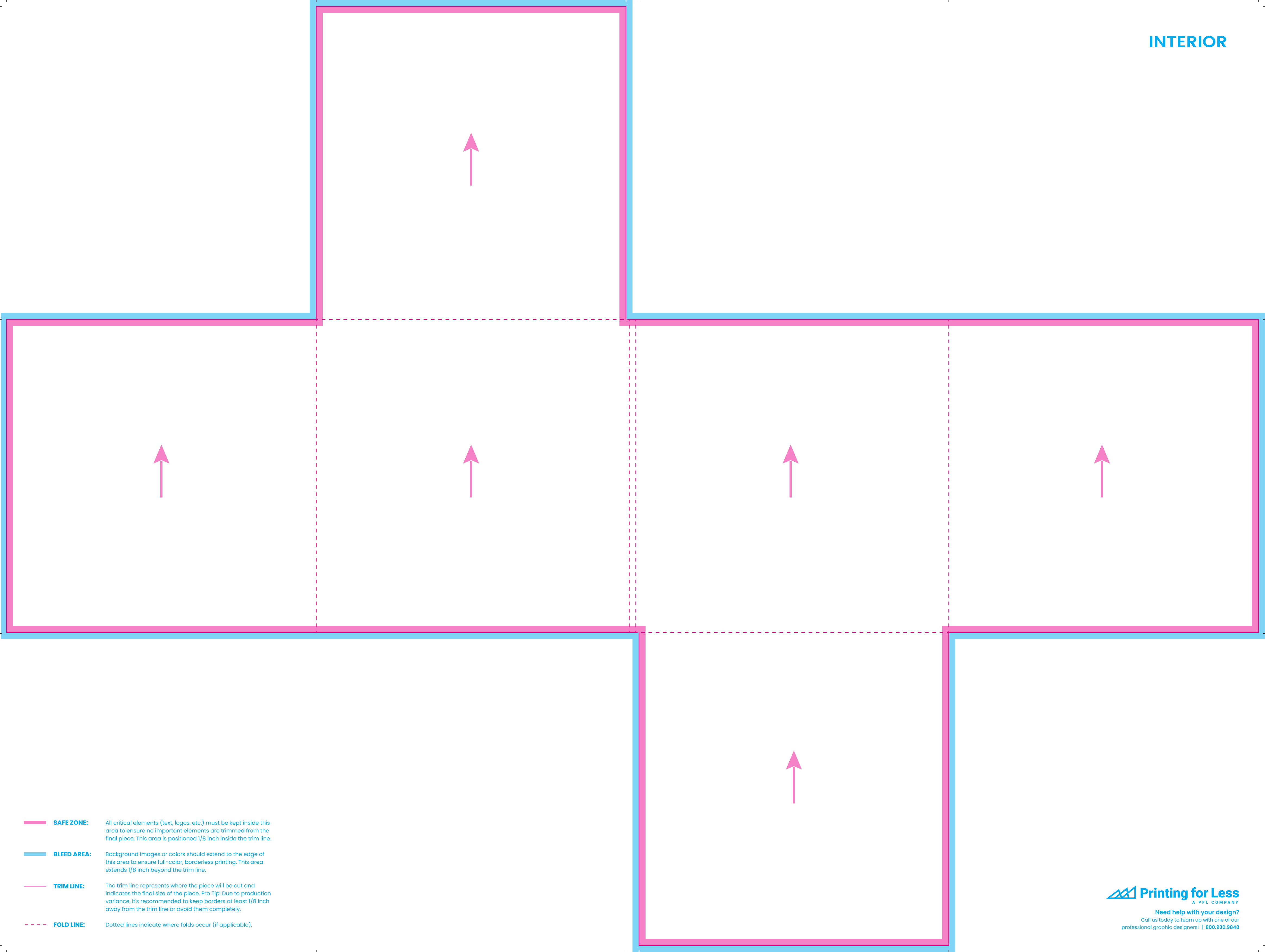


INSIDE LEFT SECOND VISIBLE

INSIDE RIGHT FIRST VISIBLE



- SAFE ZONE:** All critical elements (text, logos, etc.) must be kept inside this area to ensure no important elements are trimmed from the final piece. This area is positioned 1/8 inch inside the trim line.
- BLEED AREA:** Background images or colors should extend to the edge of this area to ensure full-color, borderless printing. This area extends 1/8 inch beyond the trim line.
- TRIM LINE:** The trim line represents where the piece will be cut and indicates the final size of the piece. Pro Tip: Due to production variance, it's recommended to keep borders at least 1/8 inch away from the trim line or avoid them completely.
- FOLD LINE:** Dotted lines indicate where folds occur (if applicable).



- SAFE ZONE:** All critical elements (text, logos, etc.) must be kept inside this area to ensure no important elements are trimmed from the final piece. This area is positioned 1/8 inch inside the trim line.
- BLEED AREA:** Background images or colors should extend to the edge of this area to ensure full-color, borderless printing. This area extends 1/8 inch beyond the trim line.
- TRIM LINE:** The trim line represents where the piece will be cut and indicates the final size of the piece. Pro Tip: Due to production variance, it's recommended to keep borders at least 1/8 inch away from the trim line or avoid them completely.
- FOLD LINE:** Dotted lines indicate where folds occur (if applicable).